



Trading Places

Coastal and Country Property Specialists



48 Silverdale Terrace , Gateshead, NE8 4JL

Trading Places are delighted to offer, to the rental market, this spacious, two bedroom, upper Maisonette situated in close proximity to Saltwell Park. Well-presented throughout, this property is sure to appeal to a wide array of people. Located on Silverdale Terrace, this apartment is close to local amenities including shops, schools and excellent transport links to surrounding areas including Gateshead, Newcastle and Durham via road and public transport. We recommend early viewings to avoid disappointment.

The property itself briefly comprises: hallway, well appointed lounge, fitted kitchen, two bedrooms with an additional loft room, and bathroom/wc. Externally the property possesses a shared yard to the rear and on-street parking to the front.

Available January 2026. EPC Rating C. Council Tax band A.
Contact Trading Places on 0191-2511189 to arrange your viewing today.

£750 Per Calendar Month

48 Silverdale Terrace

, Gateshead, NE8 4JL



- To Let
- Well Presented Throughout
- Popular Location
- Available January 2026
- Upper Maisonette
- Furnished
- Shared Rear Yard
- Two Bedrooms
- Excellent Transport Links
- Close to Saltwell Park

First Floor Landing

With doors of to

Lounge

A well presented room with window to front.

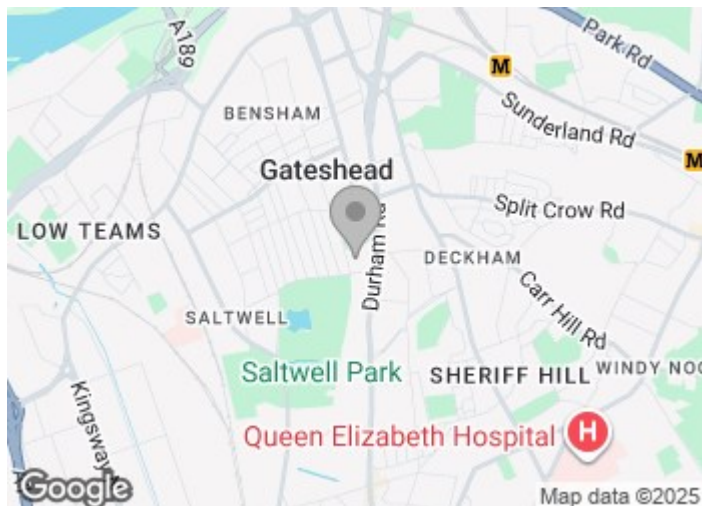
Kitchen

Bedroom Two

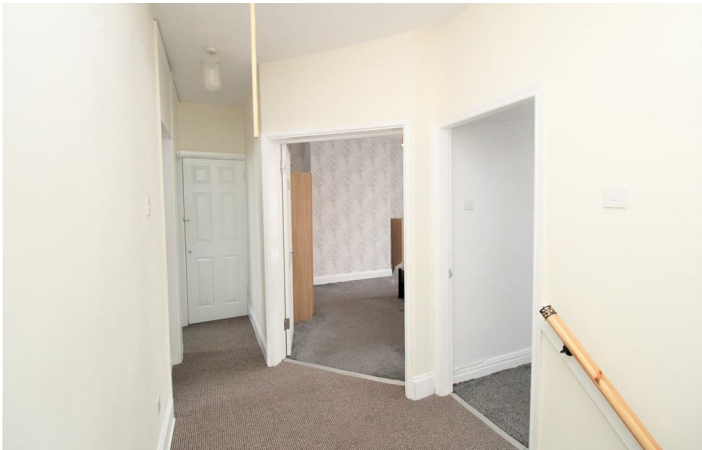
Master Bedroom

Bathroom/w.c.

Loft Room



Directions



Floor Plan

These particulars, whilst believed to be accurate are set out as a general outline only for guidance and do not constitute any part of an offer or contract. Intending purchasers should not rely on them as statements of representation of fact, but must satisfy themselves by inspection or otherwise as to their accuracy. No person in this firms employment has the authority to make or give any representation or warranty in respect of the property.

